

VECTOR *et*

extended technology in respiratory therapy



HOFFRICHTER
TECHNOLOGY FOR EASY BREATHING

VECTOR et

VECTOR *et*

Why must a therapy device always look like a medical device?
Is it possible to develop a respiratory therapy device
that provides both, good design and high-quality therapy?

The VECTOR *et* series answers all these questions.

A device with powerful therapy properties and extraordinary design. This device series is very silent despite its powerful turbine, and it is easy-to-operate thanks to its clearly arranged user interface.

► Respiratory therapy meets design in perfect relation between comfort and functionality.

- *excellent pressure regulation*
- *easy-to-use*
- *low noise level*
- *modern design*

i

When pressing the info key,
all therapy relevant
parameters will be displayed
quickly and concisely in the
blue display.



Technical Data

dimensions w / l / h	230 / 212 / 107 mm			
mass (without humidifier)	~2 kg			
power supply	100 V~ ... 240 V~, 50 ... 60 Hz, 24 V DC/ 2,1 A			
pressure range	4 ... 20 hPa (mbar)			
pressure variation	≤ 0,2 hPa (mbar) at 20 bpm (according to DIN EN ISO 17510-1)			
noise level	< 25 dB(A) at 10 hPa (mbar) (according to DIN EN ISO 17510-1)			
constant display	pressure value, bargraph, date, time, softstart ramp, alarm-clock state			
time counters	stand-by time, turbine running time, therapy time, filter age			
additional functions	start stop automatic control, softstart ramp, leakage test, leakage alarm, power failure alarm, automatic turbine start after power failure, date-, time- and wake-up-function			
languages	English, German, French, Italian, Polish, Dutch (further on request)			
humidifier	optional by AquaDROP et			
filter system	3-layers			
housing	ABS			
remote control	optional by TRENDremote or PC-Software TRENDset			
analogue output	optional by TRENDinterface			
Modi	CPAP	AutoCPAP	BILEVEL	BILEVEL ST20
CPAP	•	•	•	•
APAP	-	•	-	-
FLEXLINE	•	•	-	-
BILEVEL S	-	-	•	•
BILEVEL T	-	-	-	•
BILEVEL ST	-	-	-	•
classification	protective class II, type BF (according to DIN EN 60601-1)			
	CE-mark according to the EG-derectives 93/42/EWG, concerning medical devices, class IIa DIN EN 60601-1 "General provisions for the savety of medical devices" DIN EN 60601-1-2 "Supplement: electromagnetic compatibility, requirements and testing"			
conformity				

VECTOR et

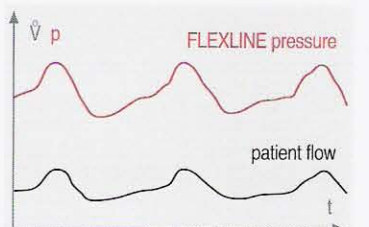
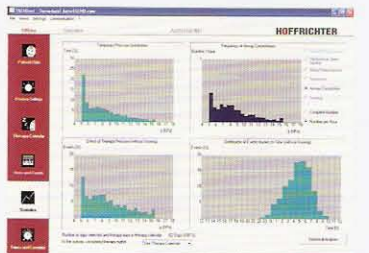


Data are subject to technical alteration.

Technical Data

dimensions w / l / h	120 / 172 / 96 mm	
mass (without water)	~350 g	
power supply	24 V DC	
power consumption	0 ... 20 W	
heating steps	1 ... 5	
max. amount of filling	~300 ml	
classification	protective class II, type BF (according to DIN EN 60601-1)	
	CE-mark according to the EG-derectives 93/42/EWG, concerning medical devices, class IIa DIN EN 60601-1 "General provisions for the savety of medical devices" DIN EN 60601-1-2 "Supplement: electromagnetic compatibility, requirements and testing"	
conformity		

AquaDROP et



P_VECet_ENG 0707-0

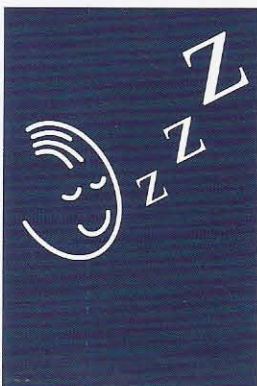
MANUFACTURED & MARKETING IN INDIA BY :



VENTILATOR NEBULIZERS
CPAP & BIPAP CAPNOGRAPH
PULSE OXIMETER SLEEP LAB/SLEEP STUDY
OXYGEN CONCENTRATOR PULSE OXIMETER & PROBES
DEFIBRILLATOR WITH MONITOR * MULTIPARAMETER MONITOR

203-205, VARDAN HOUSE, 7/28, ANSARI ROAD, DARYA GANJ,
NEW DELHI-110002 (INDIA)

PHONES : 2325 4699, 2326 6699, 2328 6699 FAX : +011-2328 9199
E-mail : medicare@satyam.net.in * www.medicareagencies.com



technical alteration.

CPAP FLEX LINE

Besides the CPAP mode, the VECTOR et also provides the new FLEXLINE mode. The pressure increase during inspiration and pressure decrease during expiration, which is proportional to the patient flow, enables natural and pleasant breathing and gives the patient the impression as if the device is not present at all.

AUTO CPAP FLEX LINE

Using a powerful algorithm, the combined evaluation of flow limitation, respiratory resistance and snoring allows the reliable distinction between obstructive and central events.

The device always provides optimal pressure within a selectable pressure range.



BILEVEL and **BILEVEL ST20**

The new trigger algorithm adjustable in three steps, enables easy pressure change between inspiration and expiration. The possibility to adjust pressure characteristics not only in terms of value but in pattern as well provides a healthy and relaxing sleep.

AquaDROP et

A therapy air humidifier for the complete VECTOR et series which is easily attached in no time, and which is also easy to remove. Filling and cleaning of the humidifier is quite uncomplicated. Using five heating levels, air humidification can be adapted to the individual requirement of the patient.



»That the possible can be created,
the impossible must be tried again
and again.«

Hermann Hesse

VECTOR et